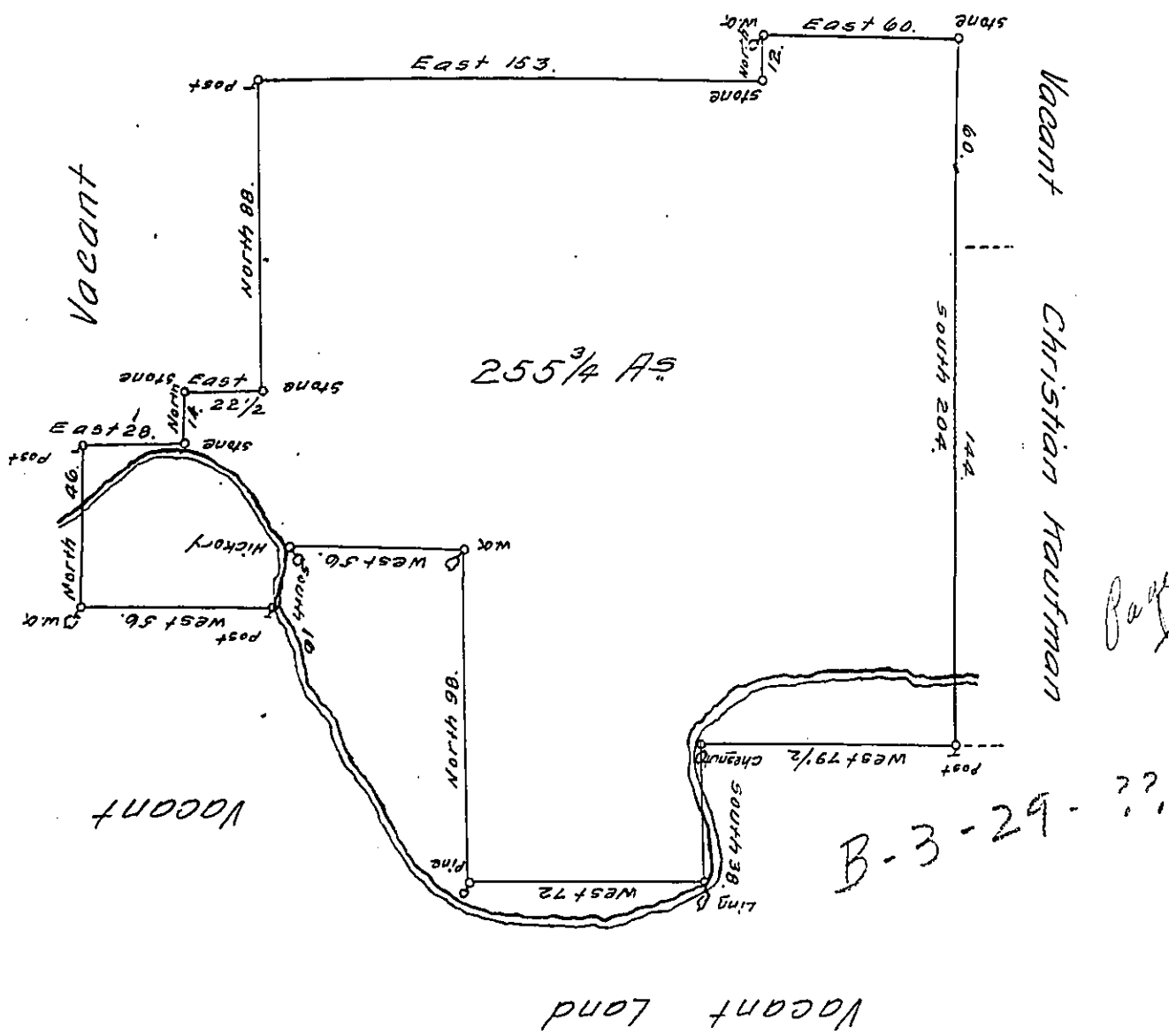


Vacant Land



A Draught of a Tract of Land situate on Pine Creek over the Broad Mountain, in the County of Berks, containing Two hundred fifty five Acres & one hundred and thirty two Perches & allowance of Six & Cent. Surveyed the 14th day of November 1766. unto Christian Kaufman, in pursuance of a Warrant dated the 31st day of May 1766. Taken from the Field Works of John Scull, dece^d.

To John Lukens Esquire }
Surveyor General. }

W^m Scull.—

IN TESTIMONY that the above is a copy of the original remaining on file in the Department of Internal Affairs of Pennsylvania, made conformably to an Act of Assembly approved the 16th day of February, 1833, I have hereunto set my Hand and caused the Seal of said Department to be affixed at Harrisburg, this twenty ninth day of December 1911.

Henry Houch
Secretary of Internal Affairs.